

GPS

Tracker

USER MANUAL
V5.0

GT60

Contents

| | | |
|----------|---|-----------|
| 1 | Product Overview | 3 |
| 2 | For Your Safety | 3 |
| 3 | GT60 Parameters | 3 |
| 4 | Getting Started | 4 |
| 4.1 | Hardware and Accessories | 4 |
| 4.2 | Light and Button Functionality | 4 |
| 4.3 | First Use | 5 |
| 5 | SMS Command | 6 |
| 5.1 | Basic SMS Commands | 6 |
| 5.1.1 | Return the location of the tracker | 6 |
| 5.1.2 | Set Interval for automatic timed report | 6 |
| 5.1.3 | Stop automatic timed report | 6 |
| 5.1.4 | SOS/Call B/Call C | 7 |
| 5.2 | GPRS Setting by SMS | 7 |
| 5.2.1 | Set ID for GT60 | 7 |
| 5.2.2 | Set APN | 7 |
| 5.2.3 | Set IP Address and Port | 7 |
| 5.2.4 | Set Time Interval for Sending GPRS Packet | 8 |
| 5.2.5 | Enable GPRS Function | 8 |
| 6 | Tracking on Map | 8 |
| 7 | Troubleshooting | 9 |
| 8 | SMS Command List | 11 |

1 Product Overview

GT60 provides an easy way to track your targets and provides peace of mind by showing you with your mobile phone or PC the location of your targets via SMS or GPRS.

GT60 has the following features:

Tracking via SMS or GPRS (TCP/UDP)

Current location report

Tracking by time interval

Two-way conversation

Voice monitoring (wiretapping)

SOS alert

Geo-fencing control

Low battery alert

Speeding alert

Alert when GT60 enters/exits GPS blind area

Alert when GT60 is turned on.

Motion sensor inbuilt for power saving

Three buttons for making phone call and/or sending message

Removable and rechargeable internal battery

Built-in speaker and microphone



2 For Your Safety

Read these simple guidelines. Not following them may be dangerous or illegal. Read the full user manual for more information.

Switch on Safely – Do not switch on GT60 when wireless phone use is prohibited or when it may cause interference or danger.

Switch off in Hospitals – Follow any restrictions. Switch GT60 off near medical equipment.

Switch off in Aircraft – Follow any restrictions. Wireless devices can cause interference in aircraft.

Switch off when refueling – Do not use GT60 when at a refueling point. Do not use near fuels or chemicals.

Switch off near blasting – Follow any restrictions. Do not use GT60 when blasting is in progress.

Qualified Service – Only qualified personnel can repair GT60.

Water Resistance – GT60 is not water resistant. Keep it dry. Use waterproof bag if necessary.

3 GT60 Parameters

| Item | Specification |
|------------------|---|
| Charging Voltage | DC 4.2-5.5V/400mA (Mini USB port) |
| Internal Battery | Rechargeable and removable 950 mAh battery (3.7V) |
| Dimension | 78 mm × 45 mm × 21 mm (14mm) |
| Weight | 75g |

| | |
|-----------------------|---|
| Operating temperature | -20° to 55° C |
| Humidity | 5% to 95% Non-condensing |
| GSM module | GSM 900/1800/1900Mhz or GSM 850/900/1800/1900Mhz |
| GPS Chipset | latest GPS SIRF-Star III chipset |
| GPS Sensitivity | -158Db |
| GPS Frequency | L1, 1575.42 MHz |
| C/A Code | 1.023 MHz chip rate |
| Channels | 20 channel all-in-view tracking |
| Position Accuracy | 10 meters, 2D RMS |
| Velocity Accuracy | 0.1 m/s |
| Time Accuracy | 1 us synchronized to GPS time |
| Default datum | WGS-84 |
| Reacquisition | 0.1 sec., average |
| Hot start | 1 sec., average |
| Warm start | 38 sec., average |
| Cold start | 42 sec., average |
| Altitude Limit | 18,000 meters (60,000 feet) max. |
| Velocity Limit | 515 meters/second (1000 knots) max. |
| Acceleration Limit | Less than 4g |
| Jerk Limit | 20 m/sec |
| Work time | 60 hours in sleep mode and 10 hours in normal mode |
| LED | 3 LEDs showing power, GPS, GSM status and other operation status. |
| Button | 3 buttons(SOS/B/C) for making phone calls or sending SMS |

4 Getting Started

This section will describe how to set up your GT60.

4.1 Hardware and Accessories

GT60 includes:

- GT60 Main Unit with battery
- USB Power Cable
- Car Charger
- Wall Charger
- CD including
 - User Manual
 - Other document or software if required



4.2 Light and Button Functionality

Your GT60 has four buttons and three LED lights with three different colors to indicate the status of the unit.



Red LED - indicating power status

Off

Power is off or charging is complete

| | |
|---|-----------|
| Flashing (every 0.1 second) | Low power |
| On | Charging |
| Flashing (on for 1 second and off for 2 seconds) | Working |

| Blue LED - indicating GPS status | |
|---|-------------------------------|
| On | One button is pressed |
| Flashing (every 0.1 second) | The unit is being Initialized |
| Flashing (on for 0.1 second and off for 2.9 seconds) | GT60 has a GPS fix |
| Flashing (on for 1 second and off for 2 seconds) | GT60 has no GPS fix |

| Green LED - indicating GSM status | |
|---|---|
| On | One call is coming in/ one call is being made |
| Flashing (every 0.1 second) | The unit is being Initialized |
| Flashing (on for 0.1 second and off for 2.9 seconds) | GT60 is connected to the GSM network |
| Flashing (on for 1 second and off for 2 seconds) | GT60 is not connected to the GSM network |

| | |
|---------------------|--|
| Power Button | To turn on/off GT60 |
| SOS Button | When it is pressed, GT60 will send its location information to the preprogrammed phone number by SMS. And simultaneously, GT60 will dial this phone number. Press it to receive an incoming call. Press it to increase volume during conversation. |
| B Button | Press B button to make a phone call and/or send an SMS to the preprogrammed phone number. Press it to reject a call, cancel calling or complete a conversation. |
| C Button | Press C button to make a phone call and/or send an SMS to the preprogrammed phone number. Press it to decrease volume during conversation. |

4.3 First Use

Please read this manual before using your GT60.

Ensure that your GT60 has a working SIM installed.

- Check that the SIM has not run out of credit
(Test the SIM in a phone to make sure it can send and receive SMS)
- Check that the SIM Lock code is turned off
- If you require the function of sending an SMS location report to the authorized phone number when it makes a call to the GT60, please make sure the SIM installed supports displaying caller ID.



Charge the battery for at least 3 hours in power-off status using the wall charger or car charger. Red light is on during charging and is off when charging is complete.

Press the power button for 3-5 seconds to activate GT60. It will then enter standby mode.

It is suggested that you be in an outer place where it can receive better GPS

When you turn on the device,



Check that the Red LED (power) on GT60 is flashing (on for 1 second and off for 2 seconds).

Check that the Green LED (GSM) is flashing (on for 0.1 second and off for 2.9 seconds).

5 SMS Command

GT60 will only accept commands from a user with the correct password. Commands with wrong password are ignored. The default password is 000000.

5.1 Basic SMS Commands

5.1.1 Return the location of the tracker

Description: To know the location of your GT60, send an SMS or make a telephone call directly to GT60 and it will report its location by SMS.

Command: W<password>,<000>

Notes: The default password is 000000.

Example:

SMS sent: W000000,000

SMS received: 22 32 36.63N Longitude = 114 04 57.37E, Speed = 2.6854Km/h, 2008-12-24,01:50

To get GT60's location by another easier way:

- (a) CallGT60 using your mobile phone.
- (b) After listening to the ring for 10 - 20 seconds, hang up the phone.
- (c) Then, in about 15 seconds, your mobile phone will receive an SMS with longitude and latitude.

5.1.2 Set Interval for automatic timed report

Description: Automatic timed reports will be sent to your mobile phone according to the time interval you set.

Command: W<password>,002,XXX

Notes: XXX is the interval in minute. If XXX=000 it will stop tracking

Example:

SMS sent: W000000,002,005

SMS received: Set Time Ok/005

Meaning: GT60 will report its location by SMS every 5 minutes.

5.1.3 Stop automatic timed report

Description: Automatic timed reports will stop once GT60 receives stop command.

Command: W<password>,002,000

Example:

SMS sent: W000000,002,000

SMS received: Set Timer Ok/000

Meaning: GT60 will stop automatic timed report.

5.1.4 SOS/Call B/Call C

Description: To authorize a mobile phone number for the SOS, B or C button. When the button is pressed, a message will be sent and/or simultaneously a call will be made to the authorized number.

Command: W<password>,003,F,P, <telephone number>

Notes:

(a) F =0, cancel this function

=1, only send SMS to the preset number

=2, only call the preset number

=3, send SMS and also Call the preset number

P =1, set a authorized number for SOS button

=2, set a authorized number for B button

=3, set a authorized number for C button

(b) When one of the buttons is pressed and a call is made, you can call and talk with the tracker-holder.

(c) Press B button to hang up the call or cancel a calling

Example:

SMS sent: W000000,003,3,1, 123456789

SMS received: Set Tel Ok/3,1, 123456789

Meaning: When the SOS button is pressed, GT60 will send an SMS to telephone number "123456789" and also make a phone call to it.

When a call is coming in, the green light is on. Press SOS button to receive the incoming call and then talk with the caller. To complete the conversation, hang up the call by pressing B button.

For more detailed SMS commands please go to Chapter 8 - SMS Command List

5.2 GPRS Settings by SMS

Tracking via GPRS, you should set IP, Port and APN for GT60.

Ensure that your SIM card in GT60 supports GPRS connection prior to setting.

5.2.1 Set ID for GT60

Command: W<password>,010,ID

Note: Tracker ID must not over 14 digits.

Example: W000000,010,123456789

GT60 will then reply with an SMS ('Set SIM Ok/123456789') to confirm this setting.

5.2.2 Set APN

Command: W<password>,011,APN,APN Name,APN Password

Note: If no APN name and password required, input APN only.

Example: W000000,011,CMNET

GT60 will reply with an SMS (like 'Set APN Ok/CMNET') to confirm this setting.

5.2.3 Set IP Address and Port

Command: W<password>,012,IP,PORT

Example: W000000,012,202.116.11.12,8000

GT60 will then reply with an SMS ('Set IP Ok /202.116.11.12,8000') to confirm this setting.

5.2.4 Set Time Interval for Sending GPRS Packet

Command: W<password>,014,time interval(in unit of 10 seconds)

Example: W000000,014,00003

GT60 will send a GPRS package every 30 seconds

5.2.5 Enable GPRS Tracking Function

Command: W<password>,013,X

X=0, to turn off GPRS tracking function(default);

X=1, to set TCP

X=2, to set UDP

Example: W00000,013,1

GT60 will reply with an SMS to confirm this setting.

For more information regarding of bulk configuration by USB cable please refer to < GPS Tracker Parameter Editor>.

For more information regarding GPRS settings please refer to <GPRS Communication Protocol >.

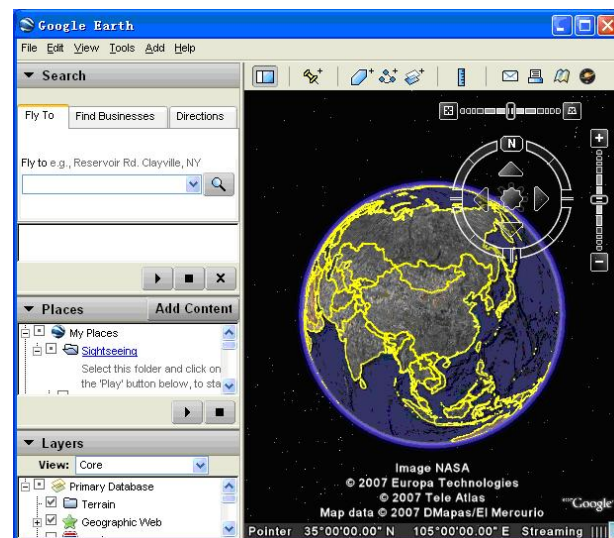
If you are using GpsGate Software, please contact us for writing GpsGate protocol before delivery.

6 Tracking on Map

Download Google Earth from <http://earth.google.com/>

Start the Google Earth (For more information about Google Earth please refer to <http://earth.google.com/>)

as the following picture shows:



Input the latitude and longitude that you receive from the tracker by SMS and click the search button.

Google Earth will display the location for you.

Example:

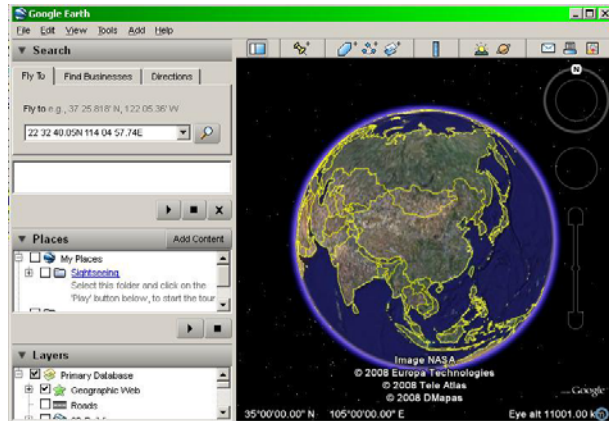
When you receive:

Latitude = 22 32 40.05N

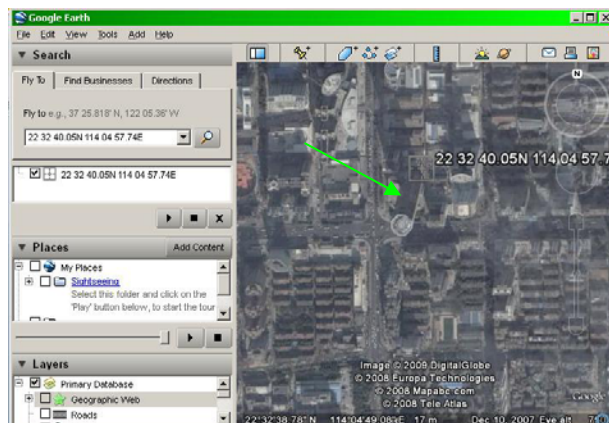
Longitude = 114 04 57.74E

Type as the following picture shows:

(Note: you should input the latitude and longitude as: 22 32 40.05N 114 04 57.74E)



Now you can find the location of your tracker:



Or you can start the Internet Explorer and connect to <http://maps.google.com> for displaying the location.

Or you can use local map software on PDA or car navigation device to input the coordinates.

7 Troubleshooting

| Problem: Unit will not turn on | |
|--|--|
| Possible Cause: | Resolution: |
| The power button is not pressed long enough | Press and hold the button for 3-5 seconds. |
| Battery needs charging | Recharge battery for 3 hours |
| Problem: Unit will not reply with SMS | |

| Possible Cause: | Resolution: |
|--|---|
| Green LED is flashing (on for 1 second and off for 2 seconds) | Make GT60 connected to GSM network. |
| GSM Network is slow | Wait for SMS. Some GSM networks slow down during peak time or when they have equipment problems. |
| Unit is sleeping | Cancel sleeping mode |
| Wrong password in your SMS or wrong SMS format | Write correct password or SMS format |
| The SIM in GT60 has run out of credit | Replace or top up the SIM card |
| Problem: Green LED is Flashing (on for 1 second and off for 2 seconds) | |
| Possible Cause: | Resolution: |
| No GSM signal | Check with a mobile phone to see if there is a signal in the area or try to call the unit to see if you hear a ring tone. |
| No SIM card | Insert a working SIM card. Check in phone that the SIM can send SMS message. |
| SIM card has expired | Check in phone that the SIM can send SMS message. Replace SIM card if needed. |
| SIM has PIN code set | Remove PIN code by inserting SIM in you phone and deleting the code. |
| SIM is warped or damaged | Inspect SIM, clean the contacts. If re-inserting does not help try another to see if it will work. |
| Roaming not enabled | If you are in a different country your SIM account must have roaming enabled. |
| Battery is low | Recharge the unit and the GSM will start working. |
| Problem: Blue LED is Flashing (on for 1 second and off for 2 seconds) or the SMS received starts with 'Last...' | |
| Possible Cause: | Resolution: |
| Unit does not have clear view of the sky | Move the unit to a location where the sky is visible. Tall buildings, trees, heavy rain, can cause problems with the GPS reception. |
| Bad GPS reception | Place the front side of GT60 towards sky |
| Battery is low | Recharge the unit and the GPS will start working. |

If any other problem occurs please contact our salesperson or engineer.

8 Command List

Remarks: ***** is user's password and the default password is 000000.

| Description | Command | Remarks |
|--|------------------|---|
| Get current location | W*****,000 | Get current location of GT60 |
| Change user's password | W*****,001,##### | ***** is old password ##### is new password |
| Set interval for automatic timed report | W*****,002,XXX | XXX is the interval in minute. If XXX=000 it will stop tracking |
| Set preset phone number for SOS button | W*****,003,F,P,T | F=0, to turn off this function; F=1, only sending SMS; F=2, only calling preset phone number; F=3, both SMS and calling (default) P=1, set a authorized number for SOS button P=2, set a authorized number for B P=3, set a authorized number for C T: Preset phone number. Max. 16 digits |
| Set low power alert When GT60 voltage is lower than the preset value, it will send one low power alert to the SOS preset number. | W*****,004,X | X (voltage preset value) =0 , to turn off this function =1, <3.3V send SMS alert =2 , <3.4V send SMS alert =3 , <3.5V send SMS alert (default) =4 , <3.6V send SMS alert =5 , <3.7V send SMS alert |
| Set over speed alert When GT60 speeds higher than the preset value, it will send one over speed alert to the SOS preset number. | W*****,005,XX | XX (the preset value of speed) =00 , to turn off this function =[01, 20] (unit: 10Km/h) For example, W000000,005,08, it will sent alert when it is over 80Km/h |
| Set Geo-fence alert When GT60 moves out of preset scope, it will send one Geo-fence SMS to the SOS preset number. | W*****,006,XX | XX (preset distance to original place) =00, to turn off this function =01, 30m =02, 50m =03, 100m =04, 200m =05, 300m =06, 500m =07, 1000m =08, 2000m |

| | | |
|-------------------------------|-------------------------------|--|
| <p>Extend Settings</p> | <p>W*****,008,ABCDEFGG###</p> | <p>A=0, turn off the function of sending an SMS location report to the authorized phone number when it makes a call to GT60.</p> <p>A=1, turn on the function of sending an SMS location report to the authorized phone number when it makes a call to GT60.</p> <p>B=0, location data of NMEA 0183 GPRMC will be interpreted into normal text for easy reading.</p> <p>For example:</p> <p><i>Longitude = 114 degree - 04 cent -57.74 second</i></p> <p><i>Latitude = 22 degree -32 cent -40.05 second</i></p> <p>B=1, location data complies with NMEA 0183 GPRMC protocol.</p> <p>For example:</p> <p><i>\$GPRMC,072414.000,V,3114.3763,N,12131.3255,E,0.00,0.00,050805,*00</i></p> <p>C=0, turn off the function to automatically hang up an incoming call.</p> <p>C=1, turn on the function to automatically hang up an incoming call after 4 - 5 rings.</p> <p>D=0, Turn off the function of sending an SMS when GT60 is turned on.</p> <p>D=1, Turn on the function of sending an SMS to SOS number when GT60 is turned on.</p> <p>E=0, reserved</p> <p>E=1, GT60 shuts down automatically when the power voltage lower than 3V.</p> <p>F=0, Turn off the alert when GT60 enters GPS blind area.</p> <p>F=1, Turn on the alert when GT60 enters GPS blind area. SMS is to be sent to SOS number</p> <p>G=0, 3 LED lights work normally</p> <p>G=1, 3 LED lights stop flashing when GT60 working.</p> <p>### is the ending character (default value is: ABCDEFG=1000100)</p> |
|-------------------------------|-------------------------------|--|

| Presetting by SMS for GPRS tracking (Ensure that your SIM card supports GPRS connection prior to setting) | | |
|---|---------------------------------------|---|
| Set ID for GT60 | W*****,010,ID | Tracker ID must not over 14 digits. |
| Set APN | W*****,011,APN,APN Name, APN Password | If no APN name and password required, just insert APN only; APN defaulted as 'CMNET'; APN+APN name + password not over 39 characters. |
| Set IP Address and Port | W*****,012,IP, Port | IP: xxx.xxx.xxx.xxx Port: [1,65534] |
| Enable GPRS Tracking Function | W*****,013,X | X=0, turn off GPRS tracking (default); X=1, enable TCP X=2, enable UDP |
| Set Time Interval for Sending GPRS Packet | W*****,014,XXXXX | XXXXX should be in five digitals and in unit of 10 seconds. XXXXX=00000, to turn off this function; XXXXX=00001~65535, time interval for sending GPRS packet and in unit of 10 seconds. |
| For more information regarding GPRS settings please refer to <GPRS Communication Protocol> | | |
| Set sleep mode for saving power | W*****,021,XX### | XX=00 turn off sleep mode XX=01 sleep mode XX=02 deep sleep mode ### is the ending character |
| Set power saving mode when GT60 is inactive (In power saving mode, GPS stops working. GSM enters standby mode and stop sending out message until it is activated by an SMS or an incoming call) | W*****,026,XX | XX=00, to turn off this function XX=01~99, to set this function. It is in unit of minute. Example: If XX=10, GT60 will enter power saving mode after it is immobile for 10 minutes. |
| Set phone number for wiretapping | W*****,030,T | T is the telephone number for wiretapping and max. 16 digits |
| Set time zone difference | W*****,032,T | T=0, to turn off this function T=[1, 65535] to set time difference in minute to GMT. Default value is GMT For those ahead of GMT, just input the time difference in minute directly. For example, W000000,032,120 '-' is required for those behind GMT. For example, W000000,032,-120. |
| Set character for SOS alert | W*****,033,P,Char | P is the button number. P=1, 2, or 3. |

| | | |
|--------------------------------------|------------|---|
| message | | P=1, SOS button P=2, Call B P=3, Call C Char is the character in SOS message and max 32 characters |
| Get version and serial number | W*****,600 | To get version and serial number of current firmware |
| Get IMEI | W*****,601 | To get IMEI |